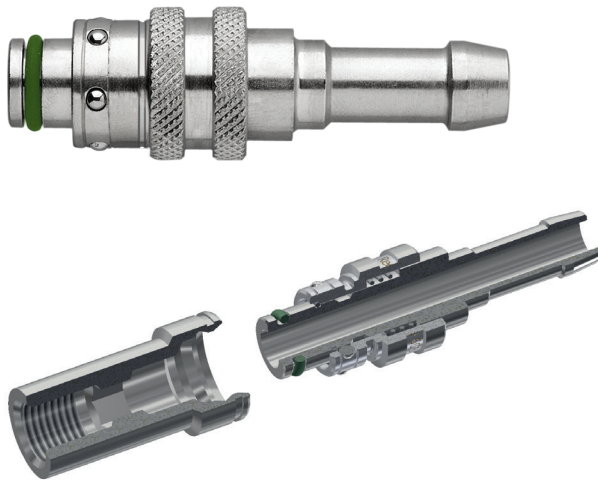


# COUPLERS

## FRENCH SERIES



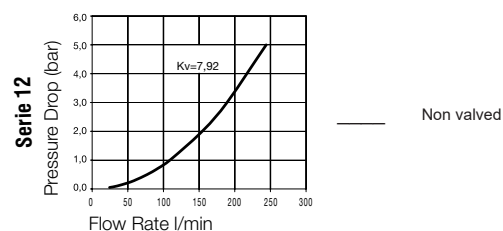
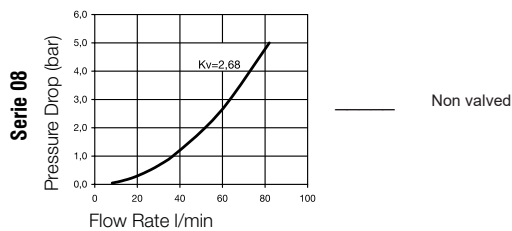
### Technical Description

Coupling series especially developed for connecting coolant lines on injection moulds.

Fully interchangeable with other brands with same plug profiles.

All dimensions and tolerances are made according to original specs.

### Chart



### Material

#### Coupling

Body	Brass, Nickel Plated
Locking Balls	AISI 420
Spring	AISI 301
Seal	FKM

#### Plug

Plug	Brass, Nickel Plated
------	----------------------

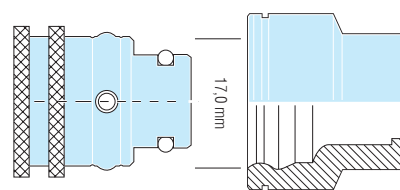
### Working Pressure

15 bar, maximum static working pressure with safety factor of 4 to 1.

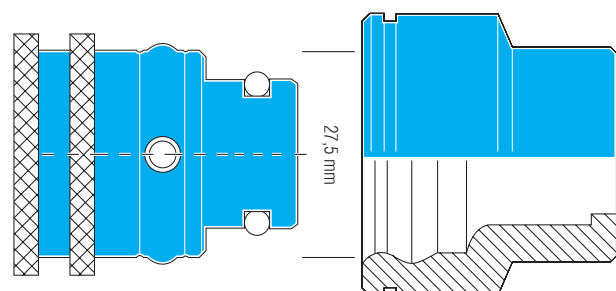
### Working Temperature

Water -15°C up to +140°C

Oil -15°C up to +180°C



Series 08



Series 12

Illustration scale 1:1